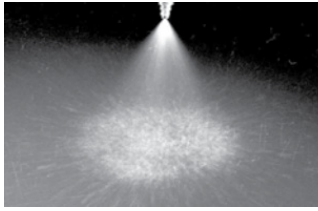


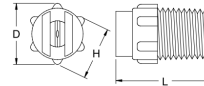
Threaded Nozzles – Full Cone Series S Molded Plastic



Polypropylene

PVDF

Non-Pigmented



Thread	Length D (mm)	Dim. H (mm)	Dim. L (mm)
1/8F	16	14	21
1/4F	16	14	24
3/8F	20	17	28

SPRAY CHARACTERISTICS:

Full cone spray pattern, with uniform distribution throughout the cone.

CONSTRUCTION:

These nozzles are injection molded and contain a patented insert with larger flow passages than older styles, and are less susceptible to clogging. Standard materials are polypropylene, and PVDF, and all materials are color-coded for easy identification. Non-pigmented versions are also available.

TYPICAL APPLICATIONS:

- Chemical Processing
- Cooling Sprays
- Foam Breaking
- Continuous Casting

MATERIALS AVAILABLE:

POLYPROPYLENE (LL) - (Green) excellent chemical and corrosion resistance. Useful up to 80°C.

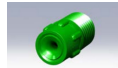
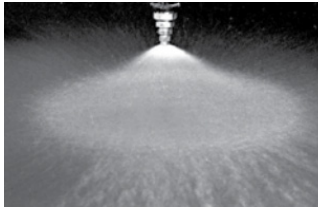
NATURAL POLYPROPYLENE (LN) - non-pigmented for optimum purity.

PVDF (KK) - (Red) excellent durability and abrasion resistance and is inert to most chemicals. Useful up to 150°C.

NATURAL PVDF (KN) - non-pigmented for optimum purity.

Model Number	Thread BSPT	MAX. FREE PASSAGE (mm)	CAPACITY (L/min) AT VARIOUS PRESSURES (bar)												Spray Angle @		
			0.2 bar	0.3 bar	0.5 bar	0.7 bar	1 bar	1.5 bar	2 bar	3 bar	4 bar	5 bar	6 bar	8 bar	0.5 bar	1.5 bar	5 bar
1/8 S1	1/8"	0.84	--	--	--	--	0.46	0.56	0.64	0.79	0.91	1.02	1.12	1.29	--	55°	52°
1/8 S1.5	1/8"	1.17	--	--	--	0.57	0.68	0.84	0.97	1.18	1.37	1.53	1.67	1.93	--	65°	57°
1/8 S2	1/8"	1.3	--	--	0.64	0.76	0.91	1.12	1.29	1.58	1.82	2.04	2.23	2.58	54°	59°	60°
1/8 S3	1/8"	1.3	--	0.75	0.97	1.14	1.37	1.67	1.93	2.37	2.73	3.06	3.3	3.9	50°	53°	60°
1/8 S3.5	1/8"	1.3	0.71	0.87	1.13	1.33	1.6	1.95	2.26	2.76	3.2	3.6	3.9	4.5	48°	58°	61°
1/8 S5	1/8"	1.63	1.02	1.25	1.61	1.91	2.28	2.79	3.2	3.9	4.6	5.1	5.6	6.4	60°	75°	70°
1/8 S6	1/8"	1.63	1.22	1.5	1.93	2.29	2.73	3.3	3.9	4.7	5.5	6.1	6.7	7.7	67°	72°	70°
¼ S5	1/4"	2.06	1.02	1.25	1.61	1.91	2.28	2.79	3.2	3.9	4.6	5.1	5.6	6.4	58°	68°	62°
¼ S6.5	1/4"	2.31	1.32	1.62	2.09	2.48	2.96	3.6	4.2	5.1	5.9	6.6	7.3	8.4	48°	56°	50°
¼ S7.5	1/4"	2.31	1.53	1.87	2.42	2.86	3.4	4.2	4.8	5.9	6.8	7.6	8.4	9.7	55°	65°	48°
¼ S8.5	1/4"	2.31	1.73	2.12	2.74	3.2	3.9	4.7	5.5	6.7	7.7	8.7	9.5	11	58°	65°	63°
¼ S10	1/4"	2.31	2.04	2.5	3.2	3.8	4.6	5.6	6.4	7.9	9.1	10.2	11.2	12.9	60°	65°	62°
¼ S14	1/4"	2.31	2.85	3.5	4.51	5.3	6.4	7.8	9	11.1	12.8	14.3	15.6	18	78°	85°	75°
3/8 S9.5	3/8"	2.59	1.94	2.37	3.06	3.6	4.3	5.3	6.1	7.5	8.7	9.7	10.6	12.2	58°	68°	62°
3/8 S10	3/8"	2.59	2.04	2.5	3.02	3.8	4.6	5.6	6.4	7.9	9.1	10.2	11.2	12.9	55°	65°	50°
3/8 S15	3/8"	2.59	2.85	3.5	4.8	5.3	6.8	8.4	9.7	11.8	13.7	15.3	16.7	19.3	63°	65°	60°

Threaded Nozzles – Full Cone Series SW & SQ Molded Plastic



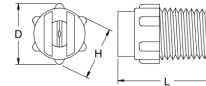
Polypropylene



PVDF



Non-Pigmented



Thread	Length D (mm)	Dim. H (mm)	Dim. L (mm)
1/8F	16	15	21
1/4F	20	17	24

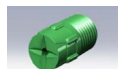
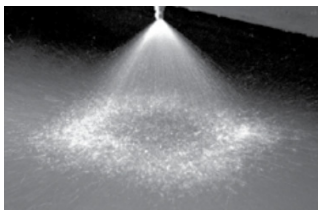
SPRAY CHARACTERISTICS:

Full cone spray pattern, with uniform distribution throughout the cone.

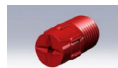
CONSTRUCTION:

These nozzles are injection molded and contain a patented insert with larger flow passages than older styles, and are less susceptible to clogging. Standard materials are polypropylene, and PVDF, and all materials are color-coded for easy identification. Non-pigmented versions are also available.

Model Number	Thread BSPT	MAX. FREE PASSAGE (mm)	CAPACITY (L/min) AT VARIOUS PRESSURES (bar)											Spray Angle @		
			0.3 bar	0.5 bar	0.7 bar	1 bar	1.5 bar	2 bar	3 bar	4 bar	5 bar	6 bar	8 bar	0.5 bar	1.5 bar	5 bar
1/8S2.8W	1/8"	1.3	--	0.90	1.07	1.28	1.56	1.80	2.21	2.55	2.85	3.13	3.60	110°	105°	96°
1/8S4.3W	1/8"	1.3	--	1.39	1.64	1.96	2.40	2.77	3.40	3.90	4.40	4.80	5.50	117°	108°	100°
1/8S5.6W	1/8"	1.63	--	1.80	2.14	2.55	3.13	3.60	4.40	5.10	5.70	6.30	7.20	117°	110°	100°
1/8S8W	1/8"	2.06	2.00	2.58	3.05	3.60	4.50	5.20	6.30	7.30	8.20	8.90	10.30	118°	110°	103°
1/4S5.6W	1/4"	1.63	1.40	1.80	2.14	2.55	3.13	3.60	4.40	5.10	5.70	6.30	7.20	120°	108°	102°
1/4S10W	1/4"	2.31	2.50	3.20	3.80	4.60	5.60	6.40	7.90	9.10	10.20	11.20	12.90	118°	108°	102°
1/4S12W	1/4"	2.31	3.00	3.90	4.60	5.50	6.70	7.70	9.50	10.90	12.20	13.40	15.50	120°	112°	102°
1/4S14W	1/4"	2.31	3.50	4.50	5.30	6.40	7.80	9.00	11.10	12.80	14.30	15.60	18.00	118°	114°	104°



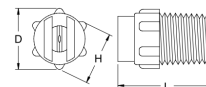
Polypropylene



PVDF



Non-Pigmented



Thread	Length D (mm)	Dim. H (mm)	Dim. L (mm)
1/8F	16	15	21
1/4F	20	17	24

SPRAY CHARACTERISTICS:

Full cone spray pattern, with uniform distribution throughout the cone.

CONSTRUCTION:

These nozzles are injection molded and contain a patented insert with larger flow passages than older styles, and are less susceptible to clogging. Standard materials are polypropylene, and PVDF, and all materials are color-coded for easy identification. Non-pigmented versions are also available.

Model Number	Thread BSPT	MAX. FREE PASSAGE (mm)	CAPACITY (L/min) AT VARIOUS PRESSURES (bar)											Spray Angle @		
			0.3 bar	0.5 bar	0.7 bar	1 bar	1.5 bar	2 bar	3 bar	4 bar	5 bar	6 bar	8 bar	0.5 bar	1.5 bar	5 bar
1/8S3.6SQ	1/8"	1.45	--	1.16	1.37	1.64	2.01	2.32	2.84	3.3	3.7	4	4.6	42°	55°	50°
1/8S4.8SQ	1/8"	1.63	--	1.55	1.83	2.19	2.68	3.09	3.8	4.4	4.9	5.4	6.2	50°	65°	60°
1/8S6SQ	1/8"	2.06	--	1.93	2.29	2.73	3.3	3.9	4.7	5.5	6.1	6.7	7.7	30°	65°	60°
1/4S6SQ	1/4"	2.06	1.5	1.93	2.29	2.73	3.3	3.9	4.7	5.5	6.1	6.7	7.7	60°	65°	60°
1/4S10SQ	1/4"	2.31	2.5	3.2	3.8	4.6	5.6	6.4	7.9	9.1	10.2	11.2	12.9	61°	67°	60°
1/4S12SQ	1/4"	2.31	3	3.9	4.6	5.5	6.7	7.7	9.5	10.9	12.2	13.4	15.5	71°	76°	69°
1/4S14SQ	1/4"	2.31	3.5	4.5	5.3	6.4	7.8	9	11.1	12.8	14.3	15.6	18	78°	85°	75°