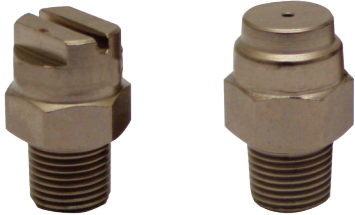




GETTO AD ALTA PRESSIONE HP

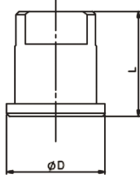
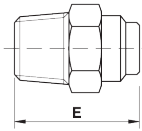
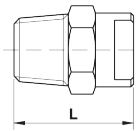
HP HIGH PRESSURE NOZZLES

CHORRO PLANO PARA ALTA PRESION HP



1/8 HP
1/4 HP

1/8 HP 0°
1/4 HP 0°

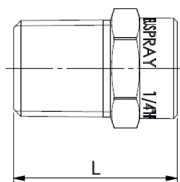


C 4

Disponibile modello 1/4" H500P per pressioni massime di utilizzo fino a 500 bar

Available model 1/4" H500P for working pressure till 500 bar

Disponibile el modelo 1/4" H500P para utilizar a presiones de hasta 500 bar



H 500 P

Caratteristiche

Gli ugelli ad alta pressione della nuova generazione a getto piatto o rettilineo tipo HP a corpo unico garantiscono la massima precisione e il più alto impatto grazie a una speciale lavorazione e ad un particolare trattamento antiusura. Orifizio protetto da urti accidentali.

Characteristics

High pressure flat or solid stream spray nozzles, HP/HPP one piece type, guarantee best precision and high impact owing to a special machining and to a special surface treatment for longer wear life. The orifice is protected from crashes and damages.

Características

Las boquillas de chorro plano o rectilíneo del tipo HP, garantizan una precisión óptima, así como un fuerte impacto, gracias a un mecanizado preciso y un tratamiento de superficie antidesgaste particular. Orificio protegido contra choques accidentales.

Applicazioni

- Idropulitrici
- Lavaggi industriali

Applications

- High pressure cleaning machines
- Industrial washing

Aplicaciones

- Máquinas de lavado de alta presión
- Lavados industriales

Come ordinare

Es. 1/8" HP 03 25°

How to Order

E.g. 1/8" HP 03 25°

Para pedidos

Ej. 1/8" HP 03 25°

MATERIALE MATERIAL MATERIAL	ATTACCO THREAD ROSCA DE CONEXIÓN	MODELLO MODEL MODELO	ORIFIZIO FLOW ORIFICE ORIFICIO	ANGOLO ANGLE ANGULO	CODICE ARTICLE CODE CÓDIGO
-	0	HP03	-	25°	0HP032

DIMENSIONI - DIMENSIONS - DIMENSIONES (mm)

	Ø	L	E
HP	1/8	22	23
HP	1/4	22	23
C4	15	16	-
H500P	1/4	22	23

TIPO TYPE TIPOS	0°				15° - 25° 40° - 50° - 65°				Ø 1 mm	PRESSIONE - PRESSURE - PRESIÓN (bar)										
	1/8		1/4		1/8		1/4			20	40	60	80	100	120	150	200	250	500	
	PORTATA - CAPACITY - CAUDAL (l/min)																			
015	•	•	•	•	•	•	•	•	0.80	1.5	2.1	2.6	3.0	3.4	3.7	4.1	4.8	5.3	7.5	
02	•	•	•	•	•	•	•	•	0.90	2.0	2.9	3.5	4.0	4.5	5.0	5.5	6.4	7.1	10	
025	•	•	•	•	•	•	•	•	1.00	2.6	3.6	4.4	5.1	5.7	6.3	7.0	8.1	9.0	13	
03	•	•	•	•	•	•	•	•	1.10	3.1	4.3	5.3	6.1	6.9	7.5	8.4	9.7	10.8	15.5	
035	•	•	•	•	•	•	•	•	1.15	3.6	5.1	6.3	7.3	8.1	8.9	10.0	11.5	12.8	18	
04	•	•	•	•	•	•	•	•	1.20	4.1	5.8	7.1	8.2	9.1	10.0	11.2	12.9	14.4	20.5	
045	•	•	•	•	•	•	•	•	1.30	4.6	6.5	7.9	9.2	10.2	11.2	12.6	14.5	16.2	23	
05	•	•	•	•	•	•	•	•	1.35	5.1	7.2	8.8	10.2	11.4	12.4	13.9	16.1	18.0	25.5	
055	•	•	•	•	•	•	•	•	1.40	5.6	7.9	9.7	11.2	12.5	13.7	15.3	17.7	19.8	28	
06	•	•	•	•	•	•	•	•	1.50	6.1	8.6	10.6	12.2	13.6	15.0	16.7	19.3	21.6	30.5	
065	•	•	•	•	•	•	•	•	1.55	6.6	9.4	11.5	13.3	14.8	16.3	18.2	21.0	23.5	33	
07	•	•	•	•	•	•	•	•	1.60	7.3	10.3	12.6	14.5	16.3	17.8	20.0	23.0	25.7	36.5	
075	•	•	•	•	•	•	•	•	1.65	7.6	10.7	13.1	15.2	17.0	18.6	20.8	24.0	26.8	38	
08	•	•	•	•	•	•	•	•	1.70	8.2	11.6	14.2	16.4	18.4	20.1	22.5	26.0	29.0	41	
085	•	•	•	•	•	•	•	•	1.75	8.5	12.1	14.8	17.1	19.0	21.0	23.4	27.0	30.2	41	
09	•	•	•	•	•	•	•	•	1.80	9.2	13.0	15.9	18.3	20.5	22.5	25.1	29.0	32.4	46	
10	•	•	•	•	•	•	•	•	1.90	10.1	14.3	17.5	20.2	22.6	24.8	27.7	32.0	35.8	50.5	
13	-	•	•	•	•	•	•	•	2.20	13.0	18.3	22.5	25.9	29.0	31.8	35.5	41.0	45.8	65	
15	-	•	•	•	•	•	•	•	2.40	15.2	21.5	26.3	30.4	34.0	37.2	41.6	48.0	53.7	76	
20	-	•	•	•	•	•	•	•	2.70	20.1	28.4	34.8	40.2	44.9	49.2	55.0	63.5	71.0	100.5	
25	-	•	•	•	•	•	•	•	3.00	25.3	35.7	43.8	50.6	56.6	62.0	69.3	80.0	89.4	126.5	
30	-	•	•	•	•	•	•	•	3.30	30.2	42.7	52.3	60.4	67.5	74.0	82.7	95.5	106.8	151	
40	-	•	•	•	•	•	•	•	3.80	40.2	56.8	69.6	80.3	89.8	98.4	110.0	127	142.0	201	
50	-	•	•	•	•	•	•	•	4.20	50.0	70.7	86.5	100	111.7	122.4	136.8	158	176.6	250	
60	-	•	•	•	•	•	•	•	4.70	61.0	86.0	105	121	136	149	166.2	192	214.7	305	