



GETTO PIATTO MC-2

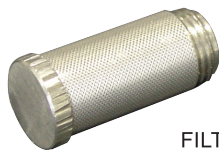
M-C2 FLAT SPRAY NOZZLES
 CHORRO PLANO MC2



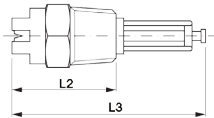
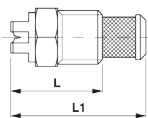
M-C2



FILTRO M7
 M7 FILTER
 FILTRO M7



FILTRO
 FILTER
 FILTRO



Caratteristiche

- Ugello per basse portate a corpo unico, attacco maschio con o senza filtro
- Angoli di spruzzo disponibili:
 0° - 15° - 25° - 40° - 50° - 65° - 80° - 95° - 110°

Applicazioni

- Lavaggi
- Raffreddamenti
- Lubrificazioni
- Trattamenti superficiali

Come ordinare

Es. 1/4" MC2 04 65° OTTONE

Characteristics

- Low capacities nozzle one piece construction, male connection with/without M7 plastic filter for 1/8 nozzle, while Brass or SS filter for 1/4 nozzle
- Available spray angles:
 0° - 15° - 25° - 40° - 50° - 65° - 80° - 95° - 110°

Applications

- Washing
- Cooling
- Lubrications
- Surface treatments

How to Order

E.g. 1/4" MC2 04 65° BRASS

Características

- Boquilla para bajo caudal. Boquilla en una sola pieza. Rosca de Conexión macho con o sin filtro
- Angulos de aspersión posibles: 0° - 15° - 25° - 40° - 50° - 65° - 80° - 95° - 110°

Aplicaciones

- Lavado
- Enfriamiento
- Lubricación
- Tratamiento de superficies

Para pedidos

Ej. 1/4" MC2 04 65° LATON

MATERIALE MATERIAL MATERIAL	ATTACCO THREAD ROSCA DE CONEXIÓN	MODELLO MODEL MODELO	ORIFIZIO FLOW ORIFICE ORIFICIO	ANGOLO ANGLE ANGULO	CODICE ARTICLE CODE CÓDIGO
O	1	MC204	-	65°	O1MC2046

DIMENSIONE - DIMENSIONS - DIMENSIONES (mm)

Ø	L	L1	L2	L3
1/8	-	-	22	42.5
1/4	23,5	41	-	-

TIPO DI UGELLO TYPE OF NOZZLE TIPOS DE BOQUILLAS	Ø1 mm	PRESSIONE - PRESSURE - PRESIÓN (bar)										
		1	2	3	4	5	6	7	10	20	35	
		PORTATA - CAPACITY - CAUDAL (l/min)										
1/8 M - C2 - 0017 *	1/4 M - C2 - 0017 *	0.28	-	0.055	0.067	0.078	0.086	0.095	0.10	0.12	0.17	0.23
1/8 M - C2 - 0025 *	1/4 M - C2 - 0025 *	0.33	-	0.08	0.11	0.12	0.13	0.14	0.15	0.18	0.25	0.33
1/8 M - C2 - 0033 *	1/4 M - C2 - 0033 *	0.38	0.07	0.11	0.13	0.14	0.17	0.18	0.20	0.24	0.33	0.45
1/8 M - C2 - 0050 *	1/4 M - C2 - 0050 *	0.46	0.11	0.16	0.20	0.22	0.25	0.28	0.30	0.35	0.52	0.66
1/8 M - C2 - 0067 *	1/4 M - C2 - 0067 *	0.53	0.15	0.21	0.26	0.30	0.34	0.36	0.40	0.48	0.68	0.90
1/8 M - C2 - 01	1/4 M - C2 - 01	0.66	0.23	0.32	0.39	0.46	0.50	0.55	0.60	0.70	1.00	1.30
1/8 M - C2 - 015	1/4 M - C2 - 015	0.79	0.34	0.48	0.59	0.68	0.76	0.83	0.90	1.10	1.50	2.00
1/8 M - C2 - 02	1/4 M - C2 - 02	0.91	0.45	0.64	0.78	0.90	1.00	1.10	1.20	1.50	2.00	2.70
1/8 M - C2 - 03	1/4 M - C2 - 03	1.1	0.68	0.96	1.20	1.36	1.50	1.70	1.80	2.10	3.00	4.00
1/8 M - C2 - 04	1/4 M - C2 - 04	1.3	0.90	1.30	1.60	1.80	2.00	2.20	2.40	2.90	4.00	5.30
1/8 M - C2 - 05	1/4 M - C2 - 05	1.4	1.10	1.60	2.00	2.20	2.50	2.80	3.00	3.60	5.00	6.70
1/8 M - C2 - 06	1/4 M - C2 - 06	1.6	1.40	1.90	2.30	2.80	3.00	3.30	3.60	4.30	6.10	8.00
1/8 M - C2 - 08	1/4 M - C2 - 08	1.8	1.80	2.60	3.2	3.60	4.08	4.40	4.80	5.70	8.10	10.70
1/8 M - C2 - 10	1/4 M - C2 - 10	2.0	2.30	3.20	3.90	4.60	5.00	5.50	6.00	7.10	10.10	13.50
1/8 M - C2 - 15	1/4 M - C2 - 15	2.4	3.40	4.80	5.90	6.80	7.60	8.30	9.00	10.70	15.20	20.00

* materiali su richiesta - material on request - bajo pedido